



Bartec TPMS is your one-stop-shop for TPMS Service. This year, Bartec USA turns TWENTY!

Our commitment to being the premier supplier to OE manufacturers, wheel and tire assemblers, automotive dealers and of course the aftermarket, has earned Bartec TPMS the reputation as:



## The Trusted Brand in TPMS Service!

Bartec TPMS is your one-stop-shop for TPMS Service!

### TPMS Sensors



RiteSensor® RiteSensorBlue®

### TPMS Valves and Service Kits



### TPMS Tools



Bartec EXCLUSIVE Rite-Sync® has revolutionized TPMS Service and Repair!



Scan the QR Code to connect to **Text2TPMS!**



**RiteSync**

Scan the QR Code to see how Rite-Sync® works!

**OR**  
We can have a Field Service Rep show you how!



# AIR TOOLS

Impact Wrenches (CP)

Sanders & Blue Tork (CP)

Air Ratchets (CP)

Buffers & Grinders (CP)

Air Drills (CP)

Air Tools & Accessories (RPG)

Impact Wrenches (IR)

Hammers, Grinders & Drills (IR)

Air Tool Lubricants & Conditioners

Accessories & Work Stations

Cordless Tools



# Impact Wrenches

## 3/8" HEAVY DUTY AIR IMPACT WRENCH

- The most powerful 3/8" of its class for general maintenance • Maximize operator comfort with an extremely light and well balanced design • Most convenient and unique reverse technology in the market • ULTIMATE TORQUE: 415 ft./lb.

ASCOT NO.	MFG. NO.	DESCRIPTION
152-07729	CP77729	3/8" Heavy Duty Air Impact Wrench

## 1/2" HEAVY DUTY AIR IMPACT WRENCH

- One hand push button forward/reverse power regulator • 4 positive power setting
- Ultimate power in reverse • Differential regulator allows the operator to match the required power to the job
- Patented oil bath Dyna-Pact clutch delivers smooth operation and extended durability • Handle exhaust with 360° air inlet swivel to prevent kinks • Power and economy for general repair, transmission work, exhaust systems and body shops • ULTIMATE TORQUE: 425 ft./lb.

ASCOT NO.	MFG. NO.	DESCRIPTION
153-00734	CP734H	1/2" Impact Wrench

## 1/2" DRIVE STUBBY IMPACT WRENCH

- BEST POWER TO WEIGHT RATIO: 450 ft./lb. (610 Nm) • Ultra compact and easy to use • Durable with a steel front cover and aluminum body
- One hand operation forward - reverse by either left or right-handed users • 3 setting positions • Jumbo hammer



The 1/2" Drive Stubby Impact Wrench in use.

ASCOT NO.	MFG. NO.	DESCRIPTION
153-07732	CP7732	1/2" Drive Stubby Impact Wrench



## 1/2" SUPER DUTY AIR IMPACT WRENCH-TIRE TOOL

- 960 ft./lb. of torque (1,300 Nm) • Hard anodized end plates • Hard chromium aluminum cylinder
- Twin hammer mechanism • Lightweight due to the Composite motor housing
- COMPACT: Only 6.6" long
- Curved handle with rubber material resistant to most chemicals used in workshops
- Full teasing trigger • 360° swivel air inlet • Friction ring socket retainer



The 1/2" Super Duty Air Impact Wrench-Tire Tool in use.

ASCOT NO.	MFG. NO.	DESCRIPTION
153-07748	CP7748	1/2" Super Duty Air Impact Wrench-Tire Tool
153-77482	CP7748-2	2" Extended Anvil

## 1/2" DRIVE IMPACT WRENCH

- Twin hammer impact mechanism • Gasket: Concave edge on both TPE gasket and motor housing
- Rotor: CM415 + heat-treatment
- HRC54 - 56 • Front/ Rear end plate: Aluminum material • Back screws: HEX head with dri-lock • Clutch housing: One rib & Aluminum material • Embossed design on motor housing for better fall protection
- Handle & Inlet: Composite housing & 360° air Inlet with two retention pins



ASCOT NO.	MFG. NO.	DESCRIPTION
153-07741	CP7741	1/2" Drive Impact Wrench
153-77412	CP7741-2	1/2" Drive Impact Wrench Extended Anvil



153-077748

153-77482

153-77412

# Impact Wrenches (cont.)

## 3/4" HEAVY DUTY AIR IMPACT WRENCH

- Smoothest operating 3/4" impact on the market • One hand push button forward/reverse power regulator • Handle exhaust with 360° air inlet swivel • APPLICATIONS: spring work, truck and bus maintenance, farm machines & construction equipment • ULTIMATE TORQUE: 1,000 ft./lb.



ASCOT NO.	MFG. NO.	DESCRIPTION
154-00772	CP772H	3/4" Impact Wrench
154-01772	CP772H-6	6" Extended Anvil

## 3/4" HEAVY DUTY AIR IMPACT WRENCH

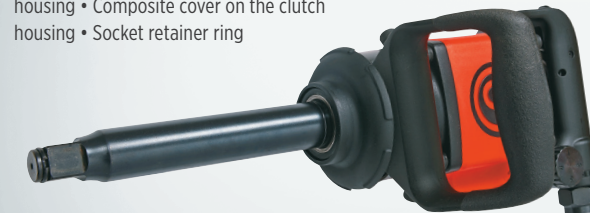
- Reduced Length at only 7.9" • All controls within reach • Variable speed trigger
- One-hand power adjustment • One-hand reverse system • 1440 ft./lb. (1950 Nm) of maximum torque • Composite motor housing • Twin hammer mechanism
- 360° swivel air inlet • Socket retainer ring combined with hole retainer



ASCOT NO.	MFG. NO.	DESCRIPTION
154-07769	CP7769	3/4" Impact Wrench
154-77696	CP7769-6	6" Extended Anvil

## 3/4" SUPER DUTY AIR IMPACT WRENCH - "D" HANDLE

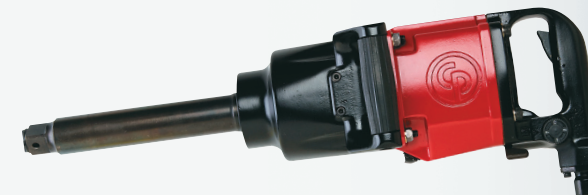
- LIGHTWEIGHT: 3/4" at only 14.3 lb. • 1300 ft./lb. (1760 Nm maximum torque in reverse) • Twin hammer mechanism • Steel motor • Intuitive Forward/Reverse lever & power regulator on both sides • 4-position power settings on both sides • Side handle with soft-touch grip • Down exhaust • Aluminum housing • Composite cover on the clutch housing • Socket retainer ring



ASCOT NO.	MFG. NO.	DESCRIPTION
154-27763	CP7763D	1" Short Shank
154-37763	CP7763D-6	6" Extended Anvil

## 1" HEAVY DUTY AIR IMPACT WRENCH

- Chicago Pneumatic's strongest and most powerful 1" Impact Wrench • Operator productivity • Convenient reverse valve • Ideal for high volume tire work on trucks, buses, and heavy equipment • 1" impact wrench with 7" extended anvil
- Rocking dog clutch • 4-position power settings throttle for ease of use



ASCOT NO.	MFG. NO.	DESCRIPTION
155-50000	CP5000	7" Extended Anvil

## 1" SUPER DUTY AIR IMPACT WRENCH

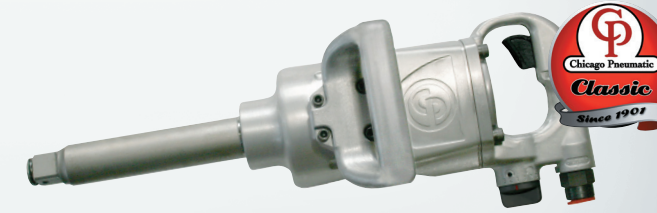
- 14.5 lb. (6.6 kg) • Twin hammer mechanism • Steel motor • Intuitive forward/reverse lever & power regulator on both sides • 4-position power settings on both sides • Side handle with soft touch grip • Down exhaust • Aluminum housing • Composite cover on the clutch housing • Socket retainer ring
- 1300 ft./lb. (1760 Nm) maximum torque in reverse



ASCOT NO.	MFG. NO.	DESCRIPTION
155-07773	CP7773D	1" Short Shank
155-77736	CP7773D-6	6" Extended Anvil

## 1" HEAVY DUTY AIR IMPACT WRENCH

- High performance clutch provides longer life under tough conditions
- High-efficiency 6 vane motor for maximum performance • Bottom exhaust directs exhaust away from the operator • Three-position power regulator with directional control • ULTIMATE TORQUE: 1,620 ft./lb.



ASCOT NO.	MFG. NO.	DESCRIPTION
155-07778	CP7778	1" Short Shank
155-77786	CP7778-6	6" Extended Anvil
155-27786	CP7778SP-6	#5 Spline with 6" Extended Anvil



## 1" Heavy Duty Air Impact Wrench



155-77826

FULL TEASING TRIGGER

- 2140 ft./lb. (2900 Nm) of maximum torque in reverse
- Pinless closed reinforced rocking dog impact mechanism
- Socket retainer ring combined with hole retainer
- Ergonomic side handle
- Full teasing trigger
- Regulator with integrated forward/reverse with 3-position power settings in both directions

ASCOT NO.	MFG. NO.	DESCRIPTION
155-07782	CP7782	1" Short Anvil
155-77826	CP7782-6	6" Extended Anvil
155-17782	CP7782-SP6	#5 Spline with 6" Extended Anvil

### 1" HEAVY DUTY AIR IMPACT WRENCH

- High Operator Comfort-Ergonomic D-Handle with full teasing trigger • HIGH DURABILITY: Pinless closed reinforced rocking dog mechanism in oil bath
- SHOCK ABSORBING: Rubber bumper protecting both applications and tool (included) • POWERFUL AND LIGHT: 1770 ft./lb. (2400 Nm) in reverse

D-HANDLE FOR COMFORT

RUBBER BUMPER



155-07783

155-77836

ASCOT NO.	MFG. NO.	DESCRIPTION
155-07783	CP7783	1" Short Shank
155-77836	CP7783-6	6" Extended Anvil

### 1" HEAVY DUTY AIR IMPACT WRENCH

- LIGHTWEIGHT: Only 6.9 lb. (3.15 kg) thanks to a composite motor housing for an improved operator comfort • Socket retainer ring combined with hole retainer • Twin hammer mechanism • ALL CONTROLS WITHIN REACH: Variable speed trigger, One-hand power adjustment, One-hand reverse system • 360° swivel air inlet • 1440 ft./lb. (1950 Nm in reverse)

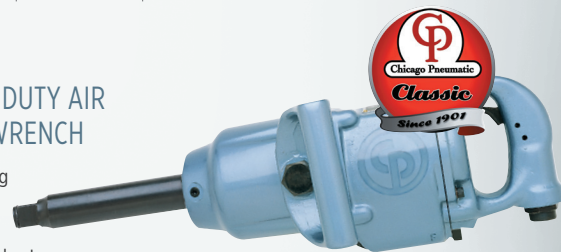


155-17779

ASCOT NO.	MFG. NO.	DESCRIPTION
155-07779	CP7779	1" Impact Wrench
155-17779	CP7779-6	6" Extended Anvil

### 1" SUPER DUTY AIR IMPACT WRENCH

- Rocking dog clutch for smooth operation and extreme durability • Teasing throttle for easy bolt starting
- Convenient reverse valve for easy directional changes • Choice of professional mechanics for high volume tire work on trucks, buses and heavy equipment • ULTIMATE TORQUE: 1,400 ft./lb.



155-07976

ASCOT NO.	MFG. NO.	DESCRIPTION
155-07971	CP797	1" Short Shank
155-07976	CP797-6	6" Extended Shank
156-79716	CP797SP-6	6" Extended Shank and #5 Spline



## Sanders & Blue Tork

### HEAVY DUTY HIGH-SPEED SANDER

- Built-in regulator and variable speed throttle for precise speed control • Rugged, energy efficient 1/2 HP motor • APPLICATIONS: Ideal for small jobs or hard to reach spots including paint removal, shaping filler patches, smoothing and rust removal • FREE SPEED: 14,000 RPM



158-00778

ASCOT NO.	MFG. NO.	DESCRIPTION
158-00778	CP9778	Heavy Duty High-Speed Sander

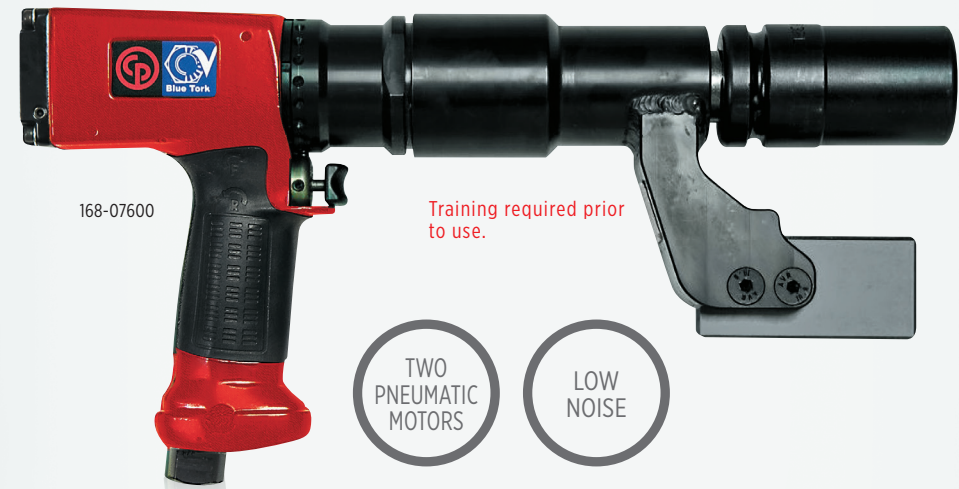
### MINI DISC SANDER KIT

- KIT INCLUDES: CP7202 Mini Disc Sander plus (1) 3" backing pad, (10) 3" 80, 100 & 120 grit sanding discs, (1) 3" fine, medium and coarse surface prep disc & a spindle wrench packed in a heavy duty carrying case • FREE SPEED: 15,000 RPM



158-07202

ASCOT NO.	MFG. NO.	DESCRIPTION
158-07202	CP7202D	Mini Disc Sander Kit



168-07600

Training required prior to use.

TWO PNEUMATIC MOTORS

LOW NOISE

### 1" Non-Impact Wrench (Blue Tork)

- Two pneumatic motors for rundown and final tightening
- Preset and adjustable shut off for torque control
- QUALITY: Precise, accurate tightening to the manufacturer's recommended torque and angle specifications
- ENVIRONMENT IMPROVEMENTS: by increasing durability of the tools, we reduce waste
- ERGONOMICS: very low noise level, virtually no vibration
- EFFICIENCY: Precise and accurate tightening, less fatigued operators
- MAXIMUM TORQUE: 660 ft./lb.

ASCOT NO.	MFG. NO.	DESCRIPTION
168-07600	CP7600xB	Non-Reversible Single Torque Preset
168-07602	CP7600xB-R	Reversible Single Torque Preset
168-07603	CP7600xB-R4P	Reversible 4 Torque Preset Selector

# Air Ratchets



## 1/4" SUPER DUTY AIR RATCHET

• Exceptional durability with an advanced head design that virtually eliminates slippage • Urethane grip for comfort and control • Faster rundown with 250 RPM • APPLICATIONS: Under-dashboard work, small engine repair and body shops • ULTIMATE TORQUE: 15 ft./lb.



151-00826

ASCOT NO.	MFG. NO.	DESCRIPTION
151-00826	CP826	1/4" Super Duty Air Ratchet

## 3/8" HEAVY DUTY AIR RATCHET

• Advanced motor, full caged gear, and head design • Only 10.7in / 272mm long • Better access to restricted areas • 2.7 lb. / 1.2 kg • Adjustable side exhaust avoids blowing dirt and dust • Ergonomic composite grip insulates operator's hand from cold • Designed for a variety of applications from heavy ones such as transmission and suspension work to light ones such as engine repair, dashboard work and general maintenance • ULTIMATE TORQUE: 70 ft./lb.



152-07829

ASCOT NO.	MFG. NO.	DESCRIPTION
152-07829	CP7829	3/8" Heavy Duty Air Ratchet
153-07829	CP7829H	1/2" Heavy Duty Air Ratchet

## QUICK REFERENCE CHART

CP No.	Ascot No.	Sq. Drive (mm)	Std Bolt Size (mm)	Net Wt. (kg)	Avg Air Cons. (CFM)	Air Inlet (in.)	Min. Hose Size (in.)	Working Torque (ft./lbs.)	Max Torque (ft./lbs.)
CP826	151-00826	1/4" (6)	1/4" (6)	1.13 (0.51)	3.5	1/4"	3/8" (10)	5-15 (7-20)	15 (20)
CP828	151-00828	3/8" (10)	3/8" (10)	2-5/8 (1.2)	4	1/4"	3/8" (10)	10-50 (14-68)	50 (68) 150 RPM
CP7829	152-07829	3/8" (10)	3/8" (10)	1.235 (2.72)	4	1/4"	3/8" (10)	10-55 (15-68)	95 (70)
CP7830Q	152-07830	3/8" (10)	3/8" (10)	2.7 (1.2)	5 (142)	1/4"	3/8" (10)	10-90 (14-136)	90 (122)

## 3/8" EXTREME DUTY AIR RATCHET

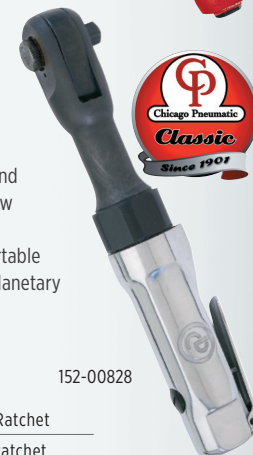
• Adjustable side exhaust • LOW NOISE LEVEL: Only 79 dBA • One of the highest torques available on the market • CP's Patented TriSpring anti-slip head design



ASCOT NO.	MFG. NO.	DESCRIPTION	152-07830
152-07830	CP7830Q	3/8" Super Duty Ratchet	
153-07830	CP7830HQ	1/2" Super Duty Ratchet	

## 3/8" QUIET AIR RATCHET

• APPLICATIONS: exhaust systems, small engines, water and fuel pumps and radiator and air conditioner removal and replacement • New advanced, patented head design • Patented ergonomic square-handle design for a comfortable grip • Efficient 1/2 HP motor and triple idler planetary gear system • ULTIMATE TORQUE: 50 ft./lb.



ASCOT NO.	MFG. NO.	DESCRIPTION	152-00828
152-00828	CP828	3/8" Quiet Air Ratchet	
153-08281	CP828H	1/2" Quiet Air Ratchet	



The 3/8" Air Ratchet in use.

# Needle Scaler, Cutter, Tire Buffers

## NEEDLE SCALER

• Ideal for surface preparation work • Adjustable sleeve allows needle clearance based on the application • 19 1/8" steel needles with high resistance to wear • Easily converts to a weld flux chipping hammer • BLOWS PER MINUTE: 4,800



157-07120

ASCOT NO.	MFG. NO.	DESCRIPTION
157-07120	CP7120	Needle Scaler

## HIGH SPEED CUTTER

• Adjustable speed regulator for precise control • Lock off throttle to prevent accidental start up • Rear exhaust directs air away from work area • MAX RPM: 22,000



157-00874

ASCOT NO.	MFG. NO.	DESCRIPTION
157-00874	CP874	High Speed Cutter
173-00101	CW1	Cut-Off Wheel
173-00220	CW20	Arbor for High Speed Cutter (Fits 3" & 4" Cut-Off Wheels)

## HIGH SPEED TIRE BUFFER KIT

• Jacobs chuck for holding buffing accessories • Lock-off throttle • APPLICATIONS: tire patchwork, roughing areas for recapping and cleaning tire moldings • FREE SPEED: 22,000 RPM



158-00871

ASCOT NO.	MFG. NO.	DESCRIPTION
158-00871	CP871K	Includes Over Hose
158-01871	CP871	High Speed Tire Buffer Only

## COMPOSITE LOW SPEED TIRE BUFFER

• Quick Change slip chuck for fast and easy change of buffing wheel • Adjustable speed regulator for precise control • Lock off throttle to prevent accidental start ups • Rear exhaust directs air



158-03873

ASCOT NO.	MFG. NO.	DESCRIPTION
158-03873	CP873C	Low Speed Tire Buffer

# Grinders & Surface Conditioning Discs

## 2" QUICK CHANGE SURFACE CONDITIONING DISCS

• Embedded with abrasive grain to eliminate fraying of edges, resist loading and provide a consistent finish • Ideal for flat or contoured surfaces • APPLICATIONS: Light deburring, surface preparation, blending scratches, removing rust, corrosion and oxidation, removing stains from stainless steel, finishing aluminum and stainless steel • Available in fine, medium or coarse



ASCOT NO.	MFG. NO.	DESCRIPTION
417-39120	3912BLUEF	2" Quick Change Surface Conditioning Discs: Blue (Fine)
417-39121	3912MARNM	2" Quick Change Surface Conditioning Discs: Maroon (Medium)
417-39122	3912BRWNC	2" Quick Change Surface Conditioning Discs: Brown (Coarse)
417-39202	392002	Backing Pad for 2" Surface Conditioning Discs

## Grinders & Surface Conditioning Discs (cont.)

### GREEN ZIRCONIA DISCS

• Twist-to-lock backing • Offers longer life and more aggressive results than zirconia or aluminum oxide • Flexible discs resist chipping, snagging and cracking • For use on air grinders and are compatible with all 3M style, Type "R" backing pads • Especially good on extra hard metals • 20,000 RPM • 25 per box

ASCOT NO.	MFG. NO.	DESCRIPTION
417-12612	12612	2" Disc, 24 Grit (25 per box)
417-12613	12613	2" Disc, 36 Grit (25 per box)
417-12614	12614	2" Disc, 50 Grit (25 per box)
417-12615	12615	2" Disc, 80 Grit (25 per box)
417-12617	12617	3" Disc, 36 Grit (25 per box)
417-12618	12618	3" Disc, 50 Grit (25 per box)
417-12619	12619	3" Disc, 80 Grit (25 per box)



### 2" SURFACE CONDITIONING DISCS

• Best used on aluminum parts • USA MADE • QUANTITY: 25 per box • MAXIMUM OPERATING SPEED: 25,000



417-13004 417-13003, 417-13005

ASCOT NO.	MFG. NO.	DESCRIPTION	QTY./BOX
417-13003	620TE-1	2" Conditioning Discs: Brown (Coarse)	25
417-13004	622TE-1	2" Conditioning Discs: Maroon (Medium)	25
417-13005	620TE-1-50	2" Conditioning Discs: Brown (Coarse)	50

### MINI ANGLE DIE GRINDER

• Compact, lightweight design for easy maneuverability • 90° angle head allows flexibility in confined areas • Complete with 1/4" and 6mm collet • APPLICATIONS: high speed blending, smoothing, porting, and deburring in confined areas • MAX RPM: 22,500

ASCOT NO.	MFG. NO.	DESCRIPTION
157-00875	CP875	Mini Angle Die Grinder



157-00875

### MINI DIE GRINDER

• Compact, lightweight design for easy maneuverability • Adjustable speed regulator for precise control • Complete with 1/4" and 6mm collet • APPLICATIONS: high speed blending, smoothing, porting, and deburring in confined areas • MAX RPM: 30,000

ASCOT NO.	MFG. NO.	DESCRIPTION
157-00876	CP876	Mini Die Grinder

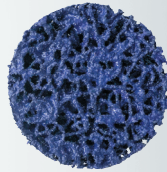


157-00876

### STRIP-BRITE PADS

• Used for paint or coating removal • Features the quick and easy twist-to-lock attachment system • Open-web construction impregnated with silicon carbide to provide aggressive and long-lasting performance • Three-dimensional web has a soft edge, allowing it to remove paint and other coatings in those unreachable creases and dents while removing very little metal • Ideal for stripping paint without damaging metal, especially on aluminum • QUANTITY: 10 per Box

417-16210



ASCOT NO.	MFG. NO.	DESCRIPTION
417-16210	16210	Purple 2" Strip-Brite Pad
417-16211	16211	Purple 3" Strip-Brite Pad

### PROFESSIONAL STUD/HUB BRUSH KIT

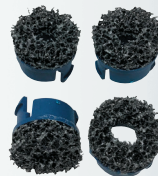
• Ideal for hub and stud cleaning job with ease • QUICK AND EASY: Change brushes in seconds • Includes a 1/2" drive adapter • Powered by a cordless drill • Replacement brushes available



402-32610



402-32613



402-32615

ASCOT NO.	MFG. NO.	DESCRIPTION
402-32610	203610-ASC	Stud/Hub Brush Kit

ASCOT NO.	MFG. NO.	DESCRIPTION
REPLACEMENT COMPONENTS FOR STUD/HUB BRUSH KIT		
402-32613	203613-ASC	4-Pack of Replacement 14mm Stud Brushes
402-32614	203614-ASC	4-Pack of Replacement 22mm Stud Brushes
402-32615	203615-ASC	4-Pack of Replacement Passenger Hub Brushes
402-32616	203616-ASC	4-Pack of Replacement Truck Hub Brushes

## Drills



### 1/4" REVERSIBLE MINI AIR DRILL

• Composite housing with thermoplastic rubber handle grip • Wings on right & left sides to guide the forefinger • Large teasing trigger and progressive valve allowing more control to start holes • Low speed gear box • Flat back part for better pushing action while drilling and tapping • Reverse lever on the top for easier access • Handle exhaust allowing the air to flow away from the operator • Supplied with high quality industrial Jacobs® chucks for longer use • keyed Metal • APPLICATIONS: Excellent for drilling, honing, reaming and hole sawing • FREE SPEED: 3,300 RPM

ASCOT NO.	MFG. NO.	DESCRIPTION
157-07302	CP7300RC	1/4" Reversible Mini Air Drill



157-07302

### 1/4" MINI AIR DRILL

• Composite housing with thermoplastic rubber handle grip • Wings on right & left sides to guide the forefinger • Large teasing trigger and progressive valve allowing more control to start holes • Low speed gear box • Flat back part for better pushing action while drilling and tapping • Handle exhaust allowing the air to flow away from the operator • Supplied with high quality industrial Jacobs® chucks for longer use • keyed Metal • APPLICATIONS: Excellent for drilling, honing, reaming and hole sawing • FREE SPEED: 3,300 RPM

ASCOT NO.	MFG. NO.	DESCRIPTION
157-17302	CP7300C	1/4" Mini Air Drill



157-17302

### 3/8" REVERSIBLE DRILL

• Teasing throttle for precise control • APPLICATIONS: Screwdriving, honing and heavy drilling • FREE SPEED: 2,600 RPM

ASCOT NO.	MFG. NO.	DESCRIPTION
157-78926	CP789-R26	3/8" Reversible Drill



157-78926

### 3/8" REVERSIBLE ANGLE DRILL

• Composite housing with thermoplastic rubber handle grip • Lock-off throttle for more controlled applications • Built-in Forward-Reverse ring • Compact low profile head to get into confined spaces • Handle exhaust allowing the air to flow away from the operator • Supplied with high quality industrial Jacobs® chucks for longer use • APPLICATIONS: Excellent for drilling and screw driving in confined areas • FREE SPEED: 2,000 RPM

ASCOT NO.	MFG. NO.	DESCRIPTION
157-01879	CP879C	3/8" Reversible Drill



157-01879

### 1/2" REVERSIBLE DRILL

• Teasing throttle for precise control • APPLICATIONS: heavy drilling, reaming, hole sawing and jobs requiring a lot of torque • FREE SPEED: 500 RPM

ASCOT NO.	MFG. NO.	DESCRIPTION
157-00789	CP789-HR	1/2" Reversible Drill



157-00789



# Air Tool Accessories

## HAMMER ACCESSORIES



INDEX NO.	ASCOT NO.	MFG. NO.	DESCRIPTION
1	171-47050	A-047050	Rivet Cutter
2	171-47051	A-047051	Wide Cutting Chisel
3	171-47052	A-047052	Bushing Splitter
4	171-47057	A-047057	U-Joint & Tie Rod Tool
5	171-47059	A-047059	1" Separator Fork
	171-47061	A-047061	1-1/4" Separator Fork
6	171-47071	A-047071	Twin Blade Cutter
7	171-47073	A-047073	Cold Chisel
8	171-47074	A-047074	Straight Punch
9	171-47078	A-047078	Tapered Punch
10	171-47091	A-047091	1-1/4" Smoothing Hammer
11	171-47095	A-047095	Quick-Change Retainer
	171-47096	A-047096	Bee-Hive Retainer
12	171-47270	CA-047270	2' Leader Hose
	171-47300	CA-047300	Quick Change Coupler
	171-47302	CA-047302	Nipple



## RPG 1/2" DRIVE SUPER DUTY AIR IMPACT WRENCH

- 2" extended anvil
- FREE SPEED: 8000 RPM
- MAXIMUM TORQUE: 600 ft./lb.
- Proven design and the most popular configuration in the tire service industry
- Powered by the durable and high performing twin hammer mechanism
- Handle exhaust



153-23120

## RPG 1/2" DRIVE COMPOSITE IMPACT WRENCH W/ EXTENDED ANVIL

- Convenient one-hand operated forward/reverse push button
- Four-setting torque adjustment switch
- Compact with a total length of only 7.2"
- Twin hammer mechanism provides smooth balance
- Feather trigger for precise speed control
- Energy efficient motor for maximum performance & long life
- Swivel air inlet prevents hose from twisting



153-12260



ONE-HAND PUSH BUTTON

### IMPACT WRENCH SPECIFICATIONS

ASCOT NO.	MFG. NO.	SQUARE DRIVE	FREE SPEED (RPM)	MAX TORQUE (FT./LB.)	AIR PRESSURE (PSI)	AIR CON. AVG (CFM)	AIR INLET (NPT)	HOSE SIZE	LENGTH	WEIGHT (LB.)
153-12260	A2131-2COMP	1/2"	7,500	685	90	5	1/4"	3/8"	7.2"	4.5
153-23120	A2312	1/2"	8,000	600	90	4	1/4"	3/8"	8-1/8"	5.6





155-17786

**RPG 1" DRIVE DUTY AIR IMPACT WRENCH**

- 6" extended anvil
- Steel end plates
- WORKING TORQUE RANGE: 1,600-1,800 ft./lb.
- FREE SPEED: 4,500 RPM
- MAXIMUM TORQUE: 1,800 ft./lb.



155-26464

**RPG 1" DRIVE MINI PLUS AIR IMPACT WRENCH**

- 6" extended anvil
- 3-position power setting
- Rubber-coated side handle for added comfort
- Powered by the twin hammer clutch
- FREE SPEED: 5,000 RPM
- MAXIMUM TORQUE: 2,000 ft./lb.



155-12856

**RPG 1" SUPER DUTY IMPACT WRENCH**

- 6" extended anvil
- 3-position forward and reverse
- High efficiency 6-vane motor
- Swoop-back side handle for maneuverability and balance
- Pinless clutch mechanism
- WORKING TORQUE RANGE: 1,800-2,000 ft./lb.
- FREE SPEED: 5,000 RPM
- MAXIMUM TORQUE: 2,000 ft./lb.

**IMPACT WRENCH SPECIFICATIONS**

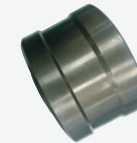
ASCOT NO.	MFG. NO.	SQUARE DRIVE	FREE SPEED (RPM)	MAX TORQUE (FT./LB.)	AIR PRESSURE (PSI)	AIR CON. AVG (CFM)	AIR INLET (NPT)	HOSE SIZE	LENGTH	WEIGHT (LB.)
155-12856	A2856	1"	5,000	2,000	—	12	1/2"	3/4"	20.5"	27.6
155-17786	A778-6	1"	4,500	1,800	90	8.4	1/2"	3/4"	20.3"	26.59
155-26464	A26464	1"	5,000	1,800	90	9	1/2"	3/4"	19.2"	17.86



**RPG Parts & Accessories**



175-10026



175-10037

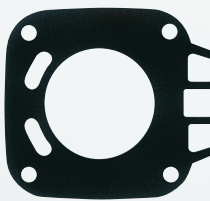


175-10043



175-10040

ASCOT NO.	MFG. NO.	DESCRIPTION
<b>REPLACEMENT PARTS FOR A778-6 1" DRIVE IMPACT WRENCH</b>		
175-10026	#26	Set of 6 Rotor Blades for A778-6 1" Drive Impact Wrench
175-10037	#37	Hammer for A778-6 1" Drive Impact Wrench
175-10040	#40	Hammer Cage for A778-6 1" Drive Impact Wrench
175-10043	#43	Replacement Side Handle Kit for A778-6 1" Drive Impact Wrench
176-18406	A778-6TK	Tune-Up Kit for A778-6 1" Drive Impact Wrench



175-18406



175-23104

ASCOT NO.	MFG. NO.	DESCRIPTION
175-23104	JB-04Blue	Blue Protective Boot for RPG A2312 Impact Wrenches
175-82651	H-082651	1" Impact Wrench Retainer Clip O-Ring
175-83071	P-08371	O-Ring for 1/2" Impact Wrench Retainer Clips

### ASCOT COMPOSITE LOW SPEED TIRE BUFFER W/ QUICK CHANGE SLIP CHUCK

- Needle bearings provide performance and durability in tough working conditions
- Includes exhaust hose
- Quick change slip chuck for fast and easy change of buffing wheel
- Lock off throttle to prevent accidental start ups
- Built-in regulator
- Rear exhaust directs air away from work area
- Ideal for patchwork, roughing areas for recapping and cleaning tire moldings
- Composite body



158-11873

### RPG LOW SPEED TIRE BUFFER WITH QUICK CHANGE SLIP CHUCK

- Brass bushings provide performance and durability in tough working conditions
- Includes whip hose and exhaust hose
- Quick change slip chuck for fast and easy change of buffing wheel
- Built-in regulator
- Lock off throttle to prevent accidental start ups
- Rear exhaust directs air away from the work area
- Ideal for patchwork, roughing areas for recapping and cleaning tire moldings
- Overhose Kit also Available Separately (175-00873)



158-10873



158-10871

### RPG HIGH SPEED TIRE BUFFER WITH OVERHOSE KIT

- Jacobs chuck for holding buffing accessories
- Lock-off throttle
- FREE SPEED: 22,000 RPM
- APPLICATIONS: Tire patchwork, roughing areas for recapping and cleaning tire moldings
- Includes overhose kit



158-11871

### RPG HIGH SPEED BUFFER KIT WITH QUICK CHANGE CHUCK

- Quick change chuck for holding buffing accessories
- Lock-off throttle
- FREE SPEED: 22,000 RPM
- APPLICATIONS: Tire patchwork, roughing areas for recapping and cleaning tire moldings
- Includes overhose kit

#### REPLACEMENT PARTS & ACCESSORIES



175-18713 175-28713

#### REPLACEMENT PARTS FOR AIR BUFFERS

ASCOT NO.	MFG. NO.	DESCRIPTION
175-00873	A-873K-OH	Overhose Kit for Tire Buffers
175-18713	A8713-TA	Trigger Assembly for Tire Buffers
175-28713	SQC01	Replacement 7/16" Quick Change Slip Chuck

#### ACCESSORIES FOR AIR BUFFERS

ASCOT NO.	MFG. NO.	DESCRIPTION
173-00018	QC18	Quick Chuck Adapter W/ Collar
173-00019	QC19	Quick Chuck Adapter W/ Spacer, 1" x 3/8" Thread
173-00020	QC20	Quick Chuck Adapter For 1/8" Shank
173-00022	QC22	Quick Chuck Adapter For 1/4" Shank
173-00023	QC23	Quick Chuck Adapter For 5/16" Shank

#### TIRE BUFFER SPECIFICATIONS

ASCOT NO.	MFG. NO.	DESCRIPTION	FREE SPEED (RPM)	LENGTH
158-11873	A873CK	Composite Low Speed Tire Buffer w/ Quick Change Slip Chuck	2,800	1.75"
158-10873	A873K	Low Speed Tire Buffer with Quick Change Chuck	2,800	1.75"
158-10871	A871K	High Speed Tire Buffer with Overhose kit	22,000	2.5"
158-11871	A871K-QC	High Speed Buffer Kit with Quick Change Chuck	22,000	1.75"



### RPG 3" CUT-OFF TOOL

- Adjustable speed regulator for precise control
- Lock-off throttle to prevent accidental start-up
- Rear exhaust directs air away from work area
- Durable gears for top performance and long life
- FREE SPEED: 22,000 RPM



157-10874

### RPG 1/4" MINI ANGLE DIE GRINDER

- Compact, lightweight design for easy use
- APPLICATIONS: High speed blending, smoothing, porting and deburring in confined areas
- Right angle for easy maneuvering
- FREE SPEED: 22,000 RPM



157-10875

### RPG 1/2" REVERSIBLE AIR DRILL

- Quick change chuck retainer
- Exhaust hose
- Side handle
- FREE SPEED: 500 RPM
- CHUCK SIZE: 1/2"
- Swivel air inlet for ease of use



175-01035

157-01035

#### PARTS & ACCESSORIES

#### REPLACEMENT PARTS FOR 1/2" REVERSIBLE AIR DRILL

ASCOT NO.	MFG. NO.	DESCRIPTION
175-01035	253340	Side Handle Kit for A1035 Air Drill
175-11035	H025	Air Hose Exhaust Kit for A1035 Air Drill

#### AIR TOOL SPECIFICATIONS

ASCOT NO.	MFG. NO.	FREE SPEED (RPM)	AIR PRESSURE (PSI)	AIR CON. AVG (CFM)	AIR INLET (NPT)	HOSE SIZE	LENGTH	WEIGHT (LB.)
157-03252	A143252	3,700	90	4	1/4"	3/8"	7.9"	1.8
157-10874	A874	22,000	90	5	1/4"	3/8"	7.25"	1.75
157-10875	A875	22,000	90	5	1/4"	3/8"	5"	1
157-01035	A1035	500	90	4	1/4"	3/8"	7.5"	2.86

### RPG WHEEL WEIGHT ADHESIVE REMOVAL TOOL

- High torque motor to cut through stubborn wheel weight adhesive, body pinstripes, etc.
- High RPM to prevent pad from bogging down
- Pad made of a tough and long-lasting material
- Rubber-insulated motor housing for hand comfort
- Lock-off trigger for added safety
- Includes eraser pad
- SPINDLE THREAD: 5/16"-24



157-03252



#### PARTS & ACCESSORIES

#### REPLACEMENT PARTS FOR WHEEL WEIGHT ADHESIVE REMOVAL TOOL

ASCOT NO.	MFG. NO.	DESCRIPTION
157-03253	A143252-6	Replacement Eraser Pads for Wheel Weight Adhesive Removal Tool (6 per Package)
157-03254	A15352-6	Conical Eraser Pads



157-03253

157-03254







### 1/2" ULTRA DUTY TITANIUM AIR IMPACT WRENCH

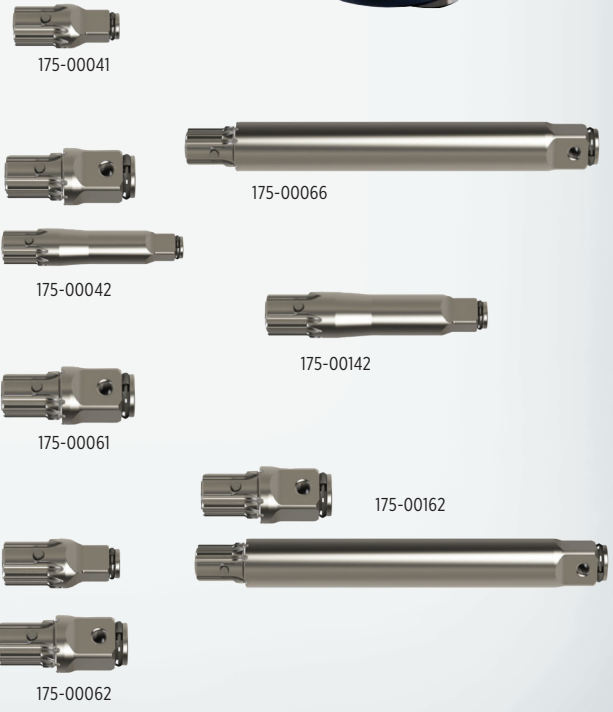
• Patented Drive Xchange System™: Helps you get more versatility, torque, and control out of your impact wrench. With 3/8", 1/2", and 3/4" drive options and 5 different anvil lengths, you can do more work with less equipment • Powerful Versatility: 1,500 ft.-lbs. of breakaway torque from a unique patented motor design • Quiet: 4 decibels quieter running from a patented motor design • Patented Direct Greasing System: Greasing your tool has never been easier. Directly grease the tool's hammer for more efficient operation and increased run time • Reliable Performance: Stay working, and at peak power by quickly replacing worn or broken anvils • Ergonomic: Smaller, lighter and better balanced design under 4.5 lbs. and 7.4" overall length

**NEW**



153-22360

153-22362



175-00041

175-00066

175-00042

175-00142

175-00061

175-00162

175-00062

ASCOT NO.	MFG. NO.	DESCRIPTION
153-22360	IR2236TiMAX	1/2" DXS Quiet Ultra Duty Air Impact Wrench - Standard Anvil
153-22362	IR2236TiMAX-2	1/2" DXS Quiet Ultra Duty Air Impact Wrench - 2" Extended Anvil
175-00041	A41H	1/2" Standard Anvil for IR2236QTiMAX Impact Wrench
175-00042	AK42H	2 pc. Anvil Set for IR2236QTiMAX Impact Wrench - 1/2" x 2" Extended & 3/4" Standard
175-00061	A61H	3/4" Standard Anvil for IR2236QTiMAX Impact Wrench
175-00062	AK62H	2 pc. Anvil Set for IR2236QTiMAX Impact Wrench - 1/2" Standard & 3/4" Standard
175-00066	EA66H	3/4" x 6" Anvil for IR2236QTiMAX Impact Wrench
175-00142	EA42H	1/2" x 2" Extended Anvil for IR2236QTiMAX Impact Wrench
175-00162	EAK62H	2 pc. Anvil Set for IR2236QTiMAX Impact Wrench - 3/4" Standard & 3/4" x 6" Extended



## Impact Wrenches

### 3/8" SUPER DUTY AIR IMPACT WRENCH

• Titanium hammer case  
• 280 ft./lb. of torque will remove even the toughest nuts and bolts  
• APPLICATIONS: Transmissions, brakes, exhaust, body repair and underhood



152-02115



ASCOT NO.	MFG. NO.	DESCRIPTION
152-02115	IR-2115TiMAX	3/8" Super Duty Air Impact Wrench

### 1/2" SUPER DUTY AIR IMPACT WRENCH

• Most popular tool in its class • Offers the sheer power and performance features to tackle the toughest of jobs  
• Durable and economical • Torque Range: 25-350 ft./lb.



153-02312

ASCOT NO.	MFG. NO.	DESCRIPTION
153-00231	IR-231HA	Standard Anvil
153-02312	IR-231HA-2	Extended Anvil

### 1/2" SUPER DUTY AIR IMPACT WRENCH

• APPLICATIONS: For tire-changing, shock and spring work, front-end work and other heavy automotive and truck work • Pumps out 500 ft./lb. of torque at a free speed of 7,000 RPM • IR-244A-2 with a two-inch extended anvil for use with flip sockets



153-02442

ASCOT NO.	MFG. NO.	DESCRIPTION
153-00244	IR-244A	Standard Anvil
153-02442	IR-244A-2	Extended Anvil

### 1/2" SUPER DUTY AIR IMPACT WRENCH

• Punish the toughest bolts with 780 ft./lb. of max reverse torque and 1,100 ft./lb. of nut-busting torque, all powered by Ingersoll Rand's finely tuned motor and twin-hammer impact mechanism • At only 4.3 pounds, the 2135QXPA is as light as it is powerful so your hand tires less, letting you get more work done • Ingersoll Rand's Quiet Technology reduces the sound of the tool, sparing your ears without sacrificing a single ounce of power



153-32135

ASCOT NO.	MFG. NO.	DESCRIPTION
153-22135	IR-2135QXPA	Standard Anvil
153-32135	IR-2135QXPA-2	Extended Anvil

### 3/8" SUPER DUTY AIR IMPACT WRENCH

• Tremendous power and longer life  
• APPLICATIONS: Popular choice of professional mechanics for under car, under hood and bench work  
• Handle exhaust directs air away from work • TORQUE RANGE: 20-150 ft./lb., 180 max.



152-00212

ASCOT NO.	MFG. NO.	DESCRIPTION
152-00212	IR-212	3/8" Super Duty Air Impact Wrench



### 3/4" SUPER DUTY AIR IMPACT WRENCH

• Non-biased motor delivers 1,050 ft./lb. of maximum torque in both forward and reverse • Two power settings in forward and reverse • Variable speed trigger • Lighter than other 3/4" impacts in its class • Handle-vented exhaust directs air away from the operator • Silenced exhaust reduces tool noise while in use



154-00259

ASCOT NO.	MFG. NO.	DESCRIPTION
154-00259	IR-259	3/4" Super Duty Air Impact Wrench

AIR TOOLS

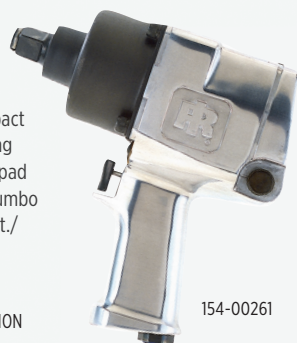
AIR TOOLS





### 3/4" SUPER DUTY AIR IMPACT WRENCH

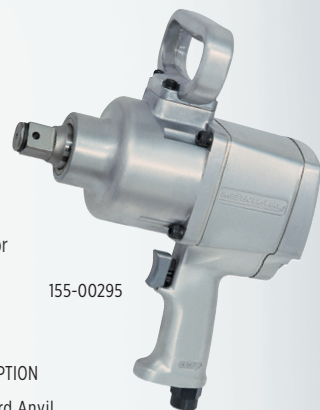
- Powerful 3/4" wrench • Combines compact size with high output • Ideal for everything from spring work to pinion nut and track pad removal and major engine teardowns • Jumbo hammer mechanism delivers up to 1,100 ft./lb. of torque smoothly, with less vibration



ASCOT NO.	MFG. NO.	DESCRIPTION
154-00261	IR-261	Standard Anvil
154-02613	IR-261-3	3" Extended Anvil
154-02616	IR-261-6	6" Extended Anvil

### 1" HEAVY DUTY AIR IMPACT WRENCH

- Improved 1" drive tool perfect for truck and heavy equipment maintenance • Offers power and convenience at an affordable price • Compact, lightweight and perfect for working on suspension components • TORQUE RANGE: 100-1000 ft./lb.



ASCOT NO.	MFG. NO.	DESCRIPTION
155-00295	IR-295	Standard Anvil
156-02951	IR-295-S	#5 Spline Drive

### 3/4" MAXIMUM IMPACT AIR IMPACT WRENCH

- 3/4" Maximum Impact Air Impact Wrench • 1350 ft./lb. maximum reverse torque from a tool that weighs just 7.4 lb. and is compact enough to access tight spaces • Built to last and designed to withstand tough use in rugged environments • An air motor that's 16% more efficient than its predecessor and an easy-to-clean inlet screen means less downtime, better tool performance, and less money spent on compressed air • TORQUE RANGE: 200-900 ft./lb.



ASCOT NO.	MFG. NO.	DESCRIPTION
154-12145	IR-2145QiMAX	Standard Anvil
154-22145	IR-2145QiMAX-3	3" Extended Anvil
154-32145	IR-2145QiMAX-6	6" Extended Anvil

### 3/4" ULTRA DUTY AIR IMPACT WRENCH

- Offers all of the ergonomic, power and durability enhancing features as the IR-2161 but with a 6" extended anvil for those hard to reach applications • Jumbo hammer mechanism • Up to 1,200 ft./lb. of torque • Trouble-free, longer performance aided by the pressure-feed lube system • Compact and only 7-5/8" long • Handle exhaust



ASCOT NO.	MFG. NO.	DESCRIPTION
154-21617	IR-2161XP-6	3/4" Ultra Duty Air Impact Wrench

### 1" D-HANDLE IMPACT WRENCH

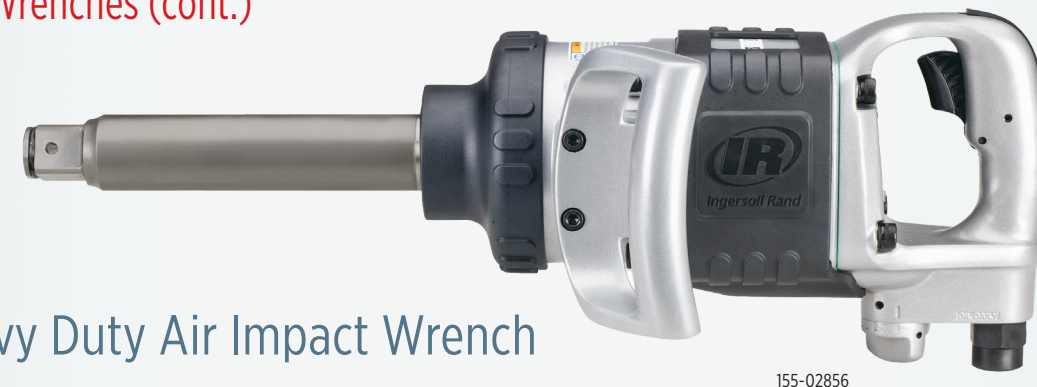
- SOLID STEEL IMPACT MECHANISM: Deliver 2,100 ft./lb. of torque • HIGHLY ENGINEERED DESIGN: Delivers the power you need over the life of the tool • STEEL CORE DESIGN: Nothing's been proven to last longer • CHEMICAL RESISTANT HOUSING & STEEL CORE: Stands up to drops and harsh work environments • LIGHTWEIGHT: 25% lighter than the industry's leading 1" wrench • 360° ADJUSTABLE HANDLE: The side handle rotates fully around the tool as the job demands • SWIVEL HOSE CONNECTION: Keeps cords from getting tangled so you can move freely around the garage • 6" ANVIL EXTENSION: Increases accessibility in hard to reach places



ASCOT NO.	MFG. NO.	DESCRIPTION
155-02850	IR-2850MAX	Standard Anvil
155-28506	IR-2850MAX-6	Extended Anvil



### Impact Wrenches (cont.)



### 1" Heavy Duty Air Impact Wrench

- Combines exceptional power, durability and operator convenience
- Delivers 1450 ft./lb. of maximum torque at 90 psi (1770 ft./lb. max torque at 120 psi) with a 5000 RPM free speed and four-position regulator 360° swivel inlet
- Chemical resistant boot
- Available in 6" extended anvil and 6" extended #5 spline anvil A1:089 or high production truck tire changing

ASCOT NO.	MFG. NO.	DESCRIPTION
155-28560	IR-285B	Standard Anvil
155-02856	IR-285B-6	6" Extended Anvil
156-28566	IR-285BS-6	#5 Spline Super Duty Anvil

### 1" SUPER DUTY AIR IMPACT WRENCH

- 1" drive wrench with 1,000 ft./lb. torque to handle tough jobs in cramped spaces
- Built-in pressure-feed lube system, adjustable side handle and built-in oil reservoir that provides continuous misting of the air motor • Available in 6" extended anvil and 6" extended #5 spline drive anvil for high production truck tire changing



ASCOT NO.	MFG. NO.	DESCRIPTION
155-00280	IR-280	Standard Anvil
155-02806	IR-280-6	6" Extended Anvil
156-28006	IR-280-S6	#5 Spline Super Duty Anvil

### 1" SUPER DUTY AIR IMPACT WRENCH

- Designed for getting into cramped spaces with three-way adjustable handle
- Ideal for spring work, tractor pads, bus maintenance and off-road/farm equipment • TORQUE RANGE: 150-1000 ft./lb. (1600 maximum)



ASCOT NO.	MFG. NO.	DESCRIPTION
155-00290	IR-290	Standard Anvil
156-02901	IR-290-S	#5 Spline

### 1" ULTRA DUTY AIR IMPACT WRENCH

- APPLICATIONS: Most powerful 1" wrench for spring work, tractor pads, bus maintenance and off-road/farm equipment
- MAXIMUM TORQUE: 2000 ft./lb.



ASCOT NO.	MFG. NO.	DESCRIPTION
155-00293	IR-293	Standard Anvil
156-02931	IR-293-S	#5 Spline Drive

### 1" ULTRA DUTY AIR IMPACT WRENCH

- High power-to-weight ratio
- Full power reverse • 3-position power regulator • 360° swivel inlet
- MAXIMUM TORQUE: 1250 ft./lb.



ASCOT NO.	MFG. NO.	DESCRIPTION
155-21710	2171XP	Standard Anvil



# Air Hammers & Die Grinders

## SUPER DUTY AIR HAMMER

- APPLICATIONS: For front-end and heavy exhaust work, riveting, king pin removal, bushing driving and bolt shearing • Controls starting strokes precisely with an extra-sensitive tease throttle
- Super duty power, at up to 1,725 blows per minute • CHISEL SHANK DIAMETER: .401"



SUPER DUTY POWER

159-00132

ASCOT NO.	MFG. NO.	DESCRIPTION
159-00132	IR-132	Super Duty Air Hammer

## HEAVY DUTY ANGLE AIR DIE GRINDER

- For work in confined areas
- Features a right angle head
- APPLICATIONS: For grinding, porting, polishing, de-burring, breaking sharp edges • Self-locking throttle lever • Positive grip 1/4" capacity collet chuck



FOR WORK IN CONFINED AREAS

157-00302

ASCOT NO.	MFG. NO.	DESCRIPTION
157-00302	IR-302B	Heavy Duty Angle Air Die Grinder

## NEEDLE SCALER

- APPLICATIONS: For surface preparation work involving the cleaning or removal of paint, rust, dirt or weld slag • Durable, dependable and economical



157-00125

FOR SURFACE PREP AND CLEANING

DURABLE & ECONOMICAL

ASCOT NO.	MFG. NO.	DESCRIPTION
157-00125	IR-125	Needle Scaler
157-02219	PF2219	Needle Scaler Replacement Needles

## AIR HAMMER KITS

- Five-piece chisel set in a plastic pouch with .401" shank diameters • INCLUDES: Edging Tool, Tail Pipe Cutter, Straight Chisel, Cutting Chisel and Pouch



171-01161

FIVE-PIECE CHISEL SET

ASCOT NO.	MFG. NO.	DESCRIPTION
171-01151	IR-115K	IR-115 Air Hammer Kit
171-01161	IR-116K	IR-116 Air Hammer Kit
171-01171	IR-117K	IR-117 Air Hammer Kit

## HEAVY DUTY AIR DIE GRINDER

- APPLICATIONS: Designed for porting, light weld grinding and breaking sharp edges • 25,000 RPM • Self-locking throttle lever
- Positive grip 1/4" capacity collet chuck with two collet wrenches



157-00308

ASCOT NO.	MFG. NO.	DESCRIPTION
157-00308	IR-308B	Heavy Duty Air Die Grinder

## SUPER DUTY MINI AIR DIE GRINDER

- APPLICATIONS: For grinding, edge-breaking, de-burring, porting and polishing • Right-angle configuration
- Compact, lightweight and easy to handle



157-00307

COMPACT & LIGHTWEIGHT

EASY TO HANDLE

ASCOT NO.	MFG. NO.	DESCRIPTION
157-00307	IR-307B	Super Duty Mini Air Die Grinder



# Finishing Tools & Air Drills

## 3/8" HEAVY DUTY AIR DRILL

- Planetary gear reduction balances the load on bearings and gears, increasing tool life • Variable speed throttle makes starting holes easy • Positive action trigger stop reduces maximum speed at any time



VARIABLE SPEED THROTTLE

157-17802

ASCOT NO.	MFG. NO.	DESCRIPTION
157-07802	IR-7802A	Standard Air Drill
157-17802	IR-7802RA	Reversible Air Drill

## 1/2" HEAVY DUTY AIR DRILL

- APPLICATIONS: Designed for drilling, hole sawing, cylinder honing and other jobs that call for a 1/2" size • Industrial grade 1/2" chuck, ball and needle bearing construction and double reduction planetary gearing for longer life • No-load speed of 500 RPM and auxiliary side handle



INDUSTRIAL GRADE 1/2" CHUCK

157-17803

ASCOT NO.	MFG. NO.	DESCRIPTION
157-07803	IR-7803A	Standard Air Drill
157-17803	IR-7803RA	Reversible Air Drill

## TIRE BUFFERS

- APPLICATIONS: For quick work of patchwork and roughing up low areas for recapping, tire scuffing and cleaning tire moldings
- Lever style tease trigger with lock-off for easy operation



LEVER-STYLE TEASE TRIGGER

JACOBS CHUCK

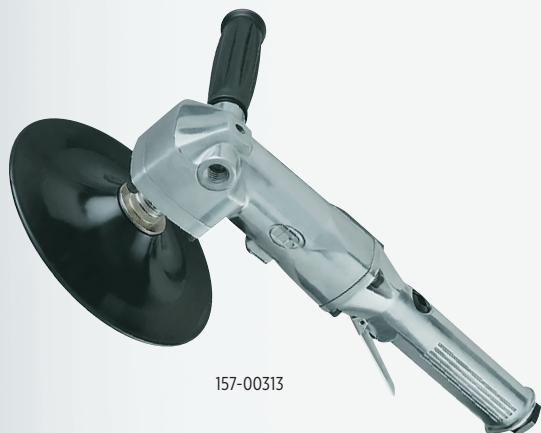
157-00327

ASCOT NO.	MFG. NO.	DESCRIPTION
157-00327	IR-327	High Speed Tire Buffer
157-01327	IR-327LS	Low Speed Tire Buffer, includes Over Hose

### Finishing Tools & Air Drills (cont.)

#### HEAVY DUTY AIR ANGLE SANDER 7" PAD

- Heavy-duty motor handles tough jobs • Lightweight at only 4.5 lb. (2.04 kg.) • Ball Bearing construction for increased tool life • APPLICATIONS: rouging body filler, removing rust, and smoothing welds



157-00313

ASCOT NO.	MFG. NO.	DESCRIPTION
157-00313	IR-313A	Heavy Duty Air Angle Sander 7" Pad

#### HEAVY DUTY DUAL ACTION QUIET AIR SANDER 6" PAD

- A built-in silencer muffles noise as you work
- APPLICATIONS: Quality sander used for feather edging, metal preparation and finish work on body filler



158-00311

ASCOT NO.	MFG. NO.	DESCRIPTION
158-00311	IR-311A	Heavy Duty Dual Action Quiet Air Sander 6" Pad



#### SURFACE CONDITIONING KIT

- KIT INCLUDES: IR301 1/4" angle head die grinder in a blow molded plastic case with two coarse and two medium grit 3" 3M Rolco™ surface conditioning pads, two coarse, two medium grit 2" 3M Rolco™ surface conditioning pads and a disc holder



QUICK CHANGE CHUCK

ASCOT NO.	MFG. NO.	DESCRIPTION
158-03012	IR-301-2MK	Surface Conditioning Kit

## Air Tool Lubricants & Conditioner



#### BLASTER AIR TOOL CONDITIONER

- APPLICATIONS: Thoroughly cleans internal pneumatic tool parts, restoring them to peak performance and prolonging tool life
- Breaks loose deposits that create friction and impede smooth operation
- Provides long-lasting lubrication
- Protects tools from freezing down to -25°F
- 12 cans per case



THOROUGHLY CLEANS PARTS

ASCOT NO.	MFG. NO.	DESCRIPTION
181-00404	16-ATC	Blaster Air Tool Conditioner - 11 Oz.
181-01404	ATC-TS	Blaster Air Tool Conditioner - 3.5 Oz. Aerosol

#### SUPER RED PNEUMATIC AIR TOOL LUBRICANT

- APPLICATIONS: Dissolves gum & varnish formation
- Prevents gum & varnish formation
- Ensures smoother starts
- Special rust & oxidation inhibitor
- Clean and free running
- 12 bottles per case



DISSOLVES GUM & VARNISH

ASCOT NO.	MFG. NO.	DESCRIPTION
181-00406	0406	Super Red Pneumatic Air Tool Oil, 32 Oz.

#### MARVEL AIR TOOL OIL

- 12 Bottles per case • 4 oz. bottles
- Specifically formulated for use in all air tools or in-line lubricators
- Prevents rust
- Assures maximum tool performance
- Made in the U.S.A



PREVENTS RUST

ASCOT NO.	MFG. NO.	DESCRIPTION
181-00080	MM08R	Marvel Air Tool Oil 4 Oz.

#### MARVEL AIR TOOL OIL

- APPLICATIONS: Specially formulated for use in all piston type rotary air tools and in-line air lubricators
- Prevents rust formation while providing positive lubrication for smooth starting and longer tool life
- Assures maximum performance by dissolving gum and sludge
- 6 bottles per case



PREVENTS RUST

ASCOT NO.	MFG. NO.	DESCRIPTION
181-00085	MM085	32 Oz.

# Air Tool Accessories

## AIR TOOL LUBRICANTS

ASCOT NO.	MFG. NO.	DESCRIPTION
181-10510	105-LBK1	4 Oz. IR 105 Grease, 4 oz. IR10 Oil & Grease Gun Head
181-10540	105-4T	(6) 4 oz. Tubes - IR 105 Grease Refills
181-11510	115-LBK1	4 oz. IR 115 Grease, 4 oz. IR10 Oil & Grease Gun Head
181-11540	115-4T	(6) 4 oz. Tubes - IR 115 Grease Refills
181-12228	R000A2-228	Grease Gun
328-10001	100-1	1 lb. Grease for Impact Wrenches



181-10510

## AIR TOOL COVERS

• Vinyl boots also absorb some of the tool vibration and protect air impact ratchets, wrenches and drills from external damage

IR TOOL NO.	KIT NO.	ASCOT TOOL NO.
212	212-Boot	176-20232
211	211-P32	176-21132
231C, 231HA-2	231-Boot	176-23122
2235	2235M-Boot	176-13532
244A, 244A-2	244-Boot	176-24432
261, 261-2, 271	261-Boot	176-26132
285B-6, 285BS-6, 285B	285-Boot	176-28532
259	259-Boot	176-25925
2135QXPA, 2135QXPA-2	2135M-Boot	176-21350

## HAMMER MECHANISM TUNE-UP KIT

• INCLUDES: the anvil, hammer (or pins) and gaskets for the impact mechanism  
• 110-TK1 includes only the cam ball, two anvil pins and anvil spring



178-02135

IR TOOL NO.	KIT NO.	ASCOT TOOL NO.
231C, 244A	231-THK1	176-00231
231-2HA-2, 244A-2	231-THK2	178-01231
2235TIMAX	2235-THK1	178-02235
2135QXPA-2	2135-THK1	178-02335



## RETAINING RINGS

IR TOOL NO.	ASCOT TOOL NO.	DESCRIPTION
231-425A	175-31425	Socket Retainer for IR231, 231-2
RIA-159	175-01590	Retainer O-Ring for IR 231, 231-2
291-425	175-91425	Socket Retainer for IR-281, 285
291-426	175-81426	Retainer O-Ring for IR-281, 285

## MOTOR TUNE-UP KITS

• INCLUDES: the vanes, gaskets and seals for a complete tune-up • 231-TK3 also includes ball bearings

IR TOOL NO.	KIT NO.	ASCOT TOOL NO.
212	212-TK2	176-10212
231C, 231HA-2	231-TK3	176-10221
235	235-TK3	176-12313
244A, 244A-2	244-TK2	176-10244
261, 271	261-TK2	176-10261
280 Series	280-TK2	176-10280
7803A, 7803RA	7803-TK1	176-17803
285B-6	285B-TK1	176-10285
2235TIMAX	2235-TK1	176-22235
2135QXPA, 2135QXPA-2	2135-TK2	176-32135



## IMPACT WRENCH ACCESSORIES

ASCOT NO.	MFG. NO.	DESCRIPTION
175-52122	IR 231-425	IR 1/2" Impact Wrench Retainer Clip
175-33104	231-Boot	Red Protective Boot for IR 231HA-2 Impact Wrenches
175-82651	H-082651	1" Impact Wrench Retainer Clip O-Ring
175-83071	P-08371	O-Ring for 1/2" Impact Wrench Retainer Clips

# Work Stations



## MOBILE WHEEL WORK STATION

• Features gas-strut assisted boom that supports the weight of those heavy impact wrenches • The suspended impact wrench is capable of rotating to the operator desired position • Features side and rear storage compartments designed to organize sockets, tire irons, lubricants, hoses and various wheel parts • Air wrench is supported and held in desired position • Air wrench suspension boom allows for directional freedom and reduces damage

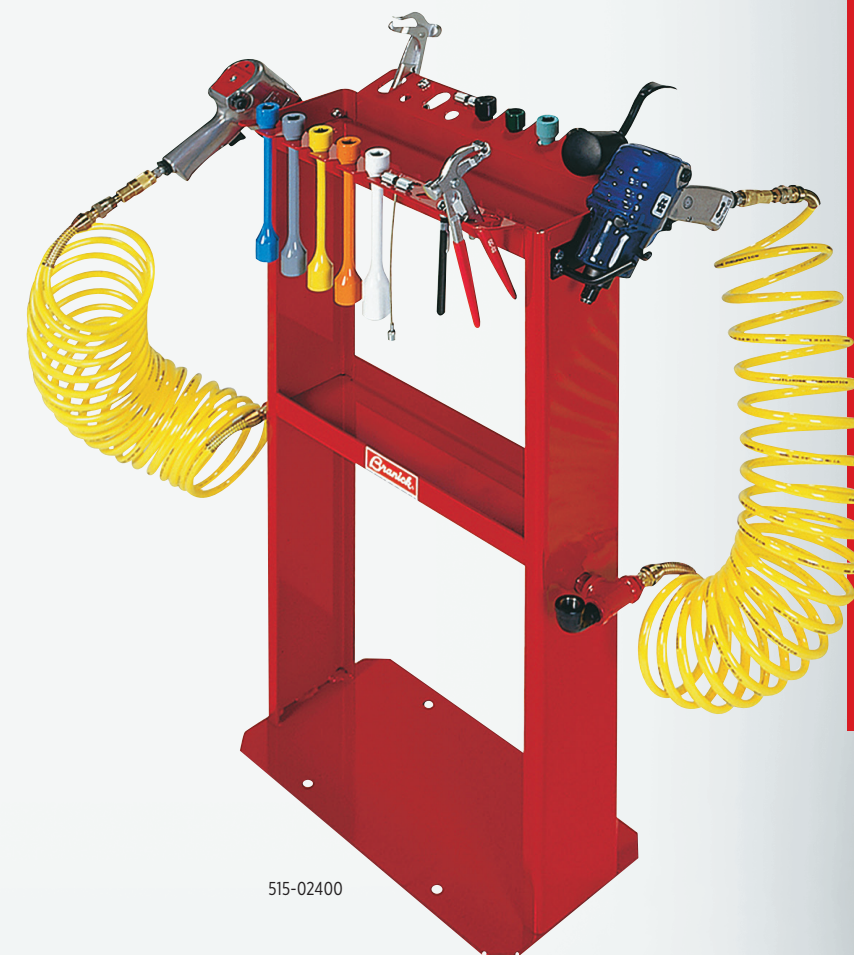


515-00555

ASCOT NO.	MFG. NO.	DESCRIPTION
515-00555	WS-005	Mobile Wheel Work Station

## TIRE TOOL STATION

• Organize your tools • Universal top tray with slots for torque sockets, etc. • Dual cradles for impact guns, 1/4" airline connections • INCLUDES: (2) 25' x 3/8" recoil hoses with 1/4" swivel fittings



515-02400

ASCOT NO.	MFG. NO.	DESCRIPTION
515-02400	2400	Tire Tool Station



# IR Cordless Tools

1100 FT./LB. NUT BUSTING TORQUE

EARTH MAGNET MOTOR

## 1/2" CORDLESS IMPACT WRENCH

- 780 ft./lb. reverse torque and 1100 ft./lb. nut-busting torque from a tool weighing just 6.8 lb., best power to weight ratio in its class.
- High-efficiency rare earth magnet motor, high-capacity variable speed trigger, all-metal drive train, and metal-reinforced housing enable this tool to stand up to the toughest jobs.
- Optimized balance combined with an ergonomic handle and soft touch over-molded grip provide increased comfort in extended use.
- Long life 20V lithium-ion battery delivers high-charge capacity and low internal impedance for maximum power delivery and run time.
- Intelligent battery management system (BMS) provides power-level and flow-rate control from the battery to the switch to the motor for optimum efficiency.



ASCOT NO.	MODEL	BATTERIES INCLUDED	DRIVE SIZE	ANVIL	MAX TORQUE FT./LB.	FREE SPEED (RPM)	BPM	LENGTH IN.	WEIGHT
153-71521	W7152	1	1/2" (Socket Retaining Ring)	Standard	1000 (1,360)	0-1900	2450	6.7	8.1 lb.
153-72522	W7252	1	1/2" (Socket Retaining Ring, 2" Ext)	2" Extended	1000 (1,360)	0-1900	2450	8.1	8.1 lb.

## 1" CORDLESS IMPACT WRENCH

- Remove hoses & trip hazards to keep operators & technicians safe
- World's Most Powerful 1" Cordless Impact Wrench with best in class power-to-weight ratio
- 250 bolts per charge – tackle a full day's worth of work
- 3,000 ft-lbs of nut busting torque, 2,200 ft-lbs of tightening torque
- IP56 rated for tough environmental conditions
- IQv Power Control System includes 3 modes: MAX Power, MID, and Snug
- 360° adjustable D-handle: rotates fully around the tool as the job demands



COMPATIBLE WITH IQV20 SERIES BATTERY

360° ADJUSTABLE D-HANDLE

ASCOT NO.	MODEL	BATTERIES INCLUDED	DRIVE SIZE	ANVIL	MAX TORQUE FT./LB.	FREE SPEED (RPM)	BPM	LENGTH IN.	WEIGHT
153-94911	W9491-K4E	1	1" Square	Standard	2600 ft./lbs.	890	1170	20-1/8"	38.3
153-96911	W9691-K4E	1	1" Square	6" Extended	3000 ft./lbs.	890	1170	26-1/8"	39.9



# Milwaukee Cordless Tools

## CORDLESS 1/2" DRIVE IMPACT WRENCH

- 4 CUSTOMIZABLE MODES: Provides multiple fastening torque outputs designed for sedans, light trucks and box trucks
- POWERSTATE™ BRUSHLESS MOTOR: Delivers up to 750 ft./lb. of fastening torque and 1,100 ft./lb. of nut-busting torque
- LONG MOTOR LIFE: POWERSTATE™ Brushless Motor delivers maximum power and long motor life
- FASTER TIRE SERVICE: Enables users to perform faster tire service by removing the hassle of pneumatic hoses, compressors, and torque sticks
- PART OF THE M18™ SYSTEM: Featuring over 175+ Tools



## 1" DRIVE EXTENDED ANVIL D-HANDLE IMPACT WRENCH

- POWERSTATE™ Brushless Motor delivers up to 2,000 ft-lbs of nut-busting torque and 1,900 ft-lbs of fastening torque
- Install up to 200 1-1/4" bolts on a single HIGH OUTPUT™ HD12.0Ah battery
- The 4-Mode DRIVE CONTROL™ provides you with greater control over the output speed and power of the MILWAUKEE® High Torque Impact Wrench
- The ONE-KEY™ Technology allows you to customize, track, and manage the impact wrench with the ability to set a repeatable torque output for maximum control



**UP TO 1,100 FT-LBS NUT-BUSTING TORQUE**

MORE POWERFUL THAN PNEUMATIC IMPACT WRENCHES

**CONTROLLED TORQUE OUTPUT**

FOUR CUSTOMIZABLE FASTENING MODES

FASTENING MODES	STOP	STOP	STOP	STOP
1	✓	✓	✓	✓
2	✓	✓	✓	✓
3	✓	✓	✓	✓
4	✓	✓	✓	✓

Always only torque with a calibrated torque wrench.

**REMOVE & INSTALL UP TO 120 LUG NUTS**

UNMATCHED PRODUCTIVITY

1 CHARGE = 12 WHEEL NUTS SERVICED

**LUG NUT MODE PREVENTS OVER-TORQUE**

AUTO SHUT-OFF™ PROVIDES MORE CONTROL

TARGET TORQUE RANGE™ AUTO SHUT-OFF™

DISABLE TORQUE MAX 407' FT

ASCOT NO.	MFG. NO.	DESCRIPTION
153-76920	2769-20	Cordless 1/2" Drive Impact Wrench - 2" Extended Anvil (Bare Tool)
153-76922	2769-22R	Cordless 1/2" Drive Impact Wrench - 2" Extended Anvil (Kit)

ASCOT NO.	MFG. NO.	DESCRIPTION
155-86920	2869-20	1" Drive Extended Anvil D-Handle Impact Wrench (Bare Tool)
155-86922	2869-22	1" Drive Extended Anvil D-Handle Impact Wrench (Kit)

CORDLESS TOOLS

CORDLESS TOOLS



CORDLESS LOW SPEED BUFFER KIT

- Dedicated buffing and drilling
- 2-Mode Drive Control™
- Drilling Mode: 1,200 RPM
- Buffing Mode: 2,500 RPM
- Runtime to complete up to 30 flat repairs on a single XC4.0Ah battery
- Premium rubber overmold withstands corrosive materials and provides increased comfort when in use
- Compatible with all M12™ batteries & chargers
- POWERSTATE™ Brushless Motor
- REDLINK PLUS™ Electronic Intelligence:
- REDLITHIUM™ batteries:
- Kit includes: Low Speed Tire Buffer, M12™ REDLITHIUM™ CP2.0 Battery, M12™ REDLITHIUM™ XC 4.0 Extended Capacity Battery Pack, M12™ Lithium-ion Battery Charger, Quick Change Adapter, Carrying Case

COMMERCIAL FLAT TIRE REPAIR KIT

- Designed to deliver you increased productivity for high volume commercial flat repairs that commercial tire technicians demand
- Kit includes: M12 FUEL™ Low Speed Tire Buffer (2409-20), M12 FUEL™ 1/2" Drill Driver (Tool Only) (2503-20), Quick Change Adapter, M12™ REDLITHIUM™ CP2.0 Battery (48-11-2420), M12™ REDLITHIUM™ XC 4.0 Extended Capacity Battery Pack(48-11-2440), M12™ Lithium-ion Battery Charger (48-59-2401) & Carrying Case



INCREASE PRODUCTIVITY FOR HIGH VOLUME REPAIRS

ASCOT NO.	MFG. NO.	DESCRIPTION
158-40920	2409-20	Cordless Low Speed Buffer
158-40922	2409-22	Cordless Low Speed Buffer Kit

ASCOT NO.	MFG. NO.	DESCRIPTION
158-45922	2459-22	Commercial Flat Tire Repair Kit

**POWER TO COMPLETE COMMERCIAL FLAT REPAIR**

PASSENGER TO COMMERCIAL TIRE CAPABILITY

Type of Tire	Buffing	Drilling
	✓	✓
	✓	✓
	✓	✓

\*with XC4.0 Battery

**2 MODES FOR CONSISTENT FLAT REPAIR**

1,200 RPM / 2,500 RPM

AVOID COSTLY MISTAKES

AVOID BURNING TIRES / AVOID OVER BUFFING

Adheres to ISTMA Speed Guidelines

**UP TO 30 REPAIRS PER CHARGE**

1 CHARGE = 30 REPAIRS

INCREASED PRODUCTIVITY, LESS DOWNTIME.

INCREASED PORTABILITY / NO TRIPPING HAZARD / NO ROUTINE MAINTENANCE



Milwaukee Power Tools (cont.)

CORDLESS 1/4" HIGH SPEED RATCHET KIT

Our M12 FUEL™ 1/4" High Speed Ratchet Kit is part of the latest addition to our best-in-class lineup of ratchets. This MILWAUKEE® cordless ratchet kit features the fastest speed while installing and removing fasteners. The most compact head size in its class gives you more access in tight spaces. A steel yoke housing and POWERSTATE™ Brushless Motor deliver the superior durability that you expect from Milwaukee. The M12 FUEL™ High Speed Ratchets are an ideal addition to any technician tool chest, allowing you to be more productive than any other battery-powered ratchet.

CORDLESS 3/8" RATCHET TOOL KIT

- MOST POWERFUL: Delivers industry leading torque output of up to 40 ft./lb.
- MOST COMPACT: Up to 20% smaller head size
- MOST DURABLE: Worlds 1st brushless ratchet provides 2x longer motor life
- Best-in class torque to head size ratio
- Premium metal components for longer durability



ASCOT NO.	MFG. NO.	DESCRIPTION
172-56622	2566-22	Cordless 1/4" Ratchet Tool Kit

ASCOT NO.	MFG. NO.	DESCRIPTION
172-55721	2557-21	Cordless 3/8" Ratchet Tool Kit

### Milwaukee Power Tools (cont.)

#### M18 CORDLESS TIRE INFLATOR

- Fastest 18V Cordless Tire Inflator: Top off 33" light truck tires in under 1 minute
- Truefill™ Technology: Auto pressure check feature activates to ensure PSI target is achieved, automatic shut-off at selected PSI prevents overinflation
- Tire capacity: Premium components and unmatched durability to handle tires over 100 PSI, rated for 150 PSI max
- Optimized for passenger, light truck and other medium duty tires
- PSI memory preset: Save your most used PSI rating with up to 4 PSI slots
- On-board hose & nozzle storage: easily store 36" hose and attachments
- Accessories: Includes all brass Schrader chuck, inflation needle, inflator nozzle & Presta chuck
- Anti-vibration feet: minimize tool walk while in use
- Fits all M18™ Batteries



477-84820

PART OF THE M18™ SYSTEM

ASCOT NO.	MFG. NO.	DESCRIPTION
477-84820	2848-20	M18 Cordless Tire Inflator



#### MILWAUKEE TOOL M18 CORDLESS 2-SPEED GREASE GUN KIT

- Delivers maximum pressure and unmatched versatility, offering an industry leading 10,000 PSI max operating pressure and a patent pending pre-set grease counter that allows service and maintenance professionals to dispense precise amounts of grease
- 2-speed design offers users the ability to select between max pressure and max flow rate
- Unique features include an on-board LED light, a lock-on/lock-off trigger, and a plunger rod with markings to gauge how much grease is left in the barrel
- The tool's stand up design and shoulder strap capability offer user convenience, while limiting fatigue and the 48" flexible hose offers greater accessibility when greasing hard to reach fittings

##### Kit Includes:

- (1) M18™ Cordless 2-Speed Grease Gun (Tool Only)(2646-20)
- (1) M18™ & M12™ Multi-Voltage Charger(48-59-1812)
- (1) M18™ Compact REDLITHIUM™ Battery (48-11-1815)
- (1) 48" Flex Hose w/ Spring Guard
- (1) High Pressure Grease Coupler
- (1) Carrying Case
- (1) Shoulder Strap



345-11835

ASCOT NO.	MFG. NO.	DESCRIPTION
324-64621	2646-21CT	Milwaukee M18 Cordless 2-Speed Grease Gun Kit



#### M18 LITHIUM 3.0AH HIGH OUTPUT BATTERY

- REDLINK™ INTELLIGENCE: Our battery circuitry provides optimized performance and overload protection using total system communication between tool, battery and charger
- BEST-IN-CLASS CONSTRUCTION: Offers long-lasting performance and the best protection against jobsite, weather and environmental conditions
- FUEL GAUGE ONBOARD: Displays remaining run-time
- VERSATILITY: Powers all 175+ M18™ cordless solutions
- Compatible with all M18™ tools
- 2 year battery warranty



345-11835

ASCOT NO.	MFG. NO.	DESCRIPTION
345-11835	48-11-1835	M18 Lithium High Output Battery CP3.0

#### M18 LITHIUM 5.0AH BATTERY PACK

- REDLINK™ INTELLIGENCE: Provides optimized performance and overload protection using total system communication between tool, battery and charger
- BEST-IN-CLASS CONSTRUCTION: Offers long-lasting performance and durability
- FUEL GAUGE ONBOARD: Displays remaining runtime for less downtime on the job
- ALL-WEATHER PERFORMANCE: Delivers fade free power in extreme jobsite conditions
- VERSATILITY: Powers more than 175+ Milwaukee® M18™ cordless power tools
- Ground transport only



345-11850

ASCOT NO.	MFG. NO.	DESCRIPTION
345-11850	48-11-1850	M18 Lithium 5.0AH Battery Pack

#### M18 LITHIUM HD12.0 HIGH OUTPUT BATTERY

- The M18 REDLITHIUM™ HIGH OUTPUT™ HD12.0 is the best performing cold weather pack ever made, providing increased power in extreme cold weather conditions (below 0F / -18C)
- Provides the most work per charge of any professional power tool battery in the industry, driving full corded replacement on the jobsite
- The REDLITHIUM™ HIGH OUTPUT™ HD12.0 battery is fully compatible with 150+ M18™ solutions



345-11812

ASCOT NO.	MFG. NO.	DESCRIPTION
345-11812	48-11-1812	M18 Lithium High Output Battery HD12.0

#### M12 LITHIUM BATTERIES

- REDLINK™ INTELLIGENCE: Provides optimized performance and overload protection using total system communication between tool, battery and charger
- BEST-IN-CLASS CONSTRUCTION: Offers long-lasting performance and durability
- ALL-WEATHER PERFORMANCE: Delivers fade-free power in extreme job site conditions
- VERSATILITY: Powers 70+ Milwaukee M12 cordless solutions

ASCOT NO.	MFG. NO.	DESCRIPTION
345-12430	48-11-2430	M12 Lithium 3.0 Compact Battery
345-12440	48-11-2440	M12 Lithium XC4.0
345-12460	48-11-2460	M12 Lithium XC6.0



345-12430



345-12440



345-12460

#### RESISTANT BATTERY STARTER KIT

- Kit includes: - (2) M18™ REDLITHIUM™ XC5.0 Resistant Batteries, (1) M18™ & M12™ Multi-Voltage Charger, (1) Contractor Bag
- Best-in-class construction: Resistant housing designed to provide increased protection against exposure to common oils, greases, and solvents
- All-weather performance: delivers fade free power in extreme jobsite conditions
- Fuel gauge onboard: Displays remaining runtime
- REDLINK™ Intelligence: Our battery circuitry provides optimized performance and overload protection using total system communication between tool, battery, and charger
- Versatility: Powers more than 250+ Milwaukee® M18™ cordless power tools
- Charges all M18™ & M12™ Batteries: Full system compatibility
- Single unit simplicity for quick charge of all M12™ and M18™ battery packs

ASCOT NO.	MFG. NO.	DESCRIPTION
345-11852	48-59-1852R	Milwaukee Tool M18 REDLITHIUM XC5.0 Resistant Battery Starter Kit





# AUTEL MAXI TPMS



## ONE TOOL. EVERYTHING TPMS. TS900

**ACTIVATE & RELEARN**  
ALL KNOWN TPMS SENSORS, INCLUDING  
TESLA BLE AND NEW AUTEL BLE



**MX-SENSOR BLE**

AVAILABLE FOR PURCHASE  
SEPARATELY P/N: 300100

**MX-SENSOR 1-SENSOR**

AVAILABLE FOR PURCHASE  
SEPARATELY P/N: 1SENSOR



ALL SYSTEMS DIAGNOSTICS



BI-DIRECTIONAL ACTIVE TESTS



PRE/POST-SCAN REPORTS



CLOUD-BASED REPORT SHARING



**AUTEL ACADEMY TECHNICAL TRAINING**

Visit [autel.com/us/academy](http://autel.com/us/academy) and register today for hands on automotive diagnostic, repair, service, and ADAS instruction.

# AUTEL®

# WHEEL SERVICE

Impact Socket Sets

Individual Impact Sockets

Torque Wrenches & Accessories

Loose Nut Prevention

Wheel Centering Products

Lug Nut Removal Products

Wheel Attaching Hardware

Tire & Wheel Service Tools

Stud & Hub Cleaning Tools



WARNING: For more information go to [www.P65Warnings.ca.gov](http://www.P65Warnings.ca.gov).

ASCOT SUPPLY CORPORATION BUYER'S GUIDE